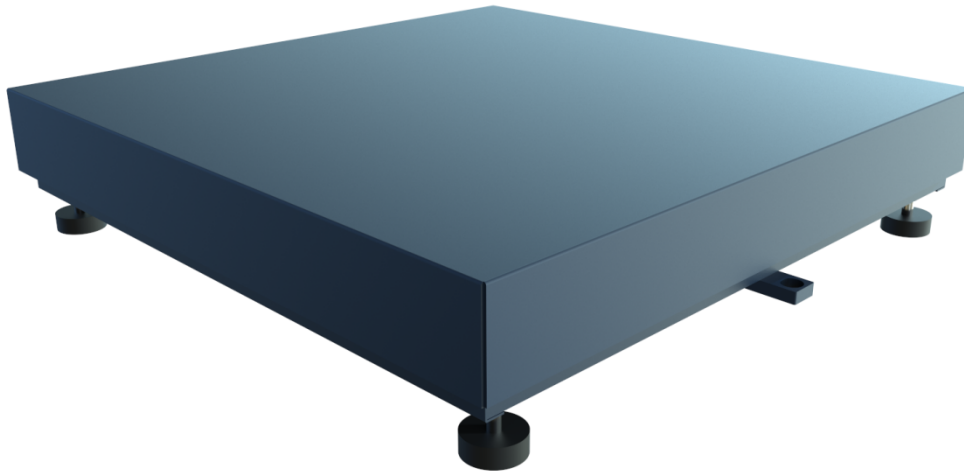


PMCT

Monocell Weighing Platform



description ROBUST AND PRACTICAL WEIGHING PLATFORM FOR SMALL AND MEDIUM CAPACITY, INDICATED FOR ALL TYPES OF INDUSTRIAL AND COMMERCIAL APPLICATIONS.

highlights The structure designed for maximum strength allows the equipment to support a high frequency of use • Adjustable feet and built-in bubble level allow correct leveling of the equipment • Complies with directive 2014/31/eu for commercial transactions.

platform Made of SR275 steel • Optional stainless steel top • Structure with overload limiters • Equipped with 1 load cell • Built-in bubble level • Surface finish in 3 steps: mechanical pickling + epoxy primer + anti-corrosion paint.

load cells Single-cell analog load cells • Capacities of 50 / 100 / 300 / 500 kg • Aluminum • IP68 protection index • CE / OIML R60 approval.

wiring harness Rubber outer coating • Stainless steel inner mesh + aluminum shield.

viewers PV1 | BP120 | BP101

options Stainless steel top | Display Column | backrest | Ramp | Cart | table | roller mat

add-ons Weight Repeater | Printer | Weighing Management Software | Industrial Tablet 10" | Industrial Terminal 15"

models	Dimensions L x W (cm)	No. Cells	Capacity (kg)	division (g)
	40x40	1x	30 / 60	10 / 20
	60x60	1x	60 / 150	20 / 50
	80 x 80	1x	150 / 300	50 / 150