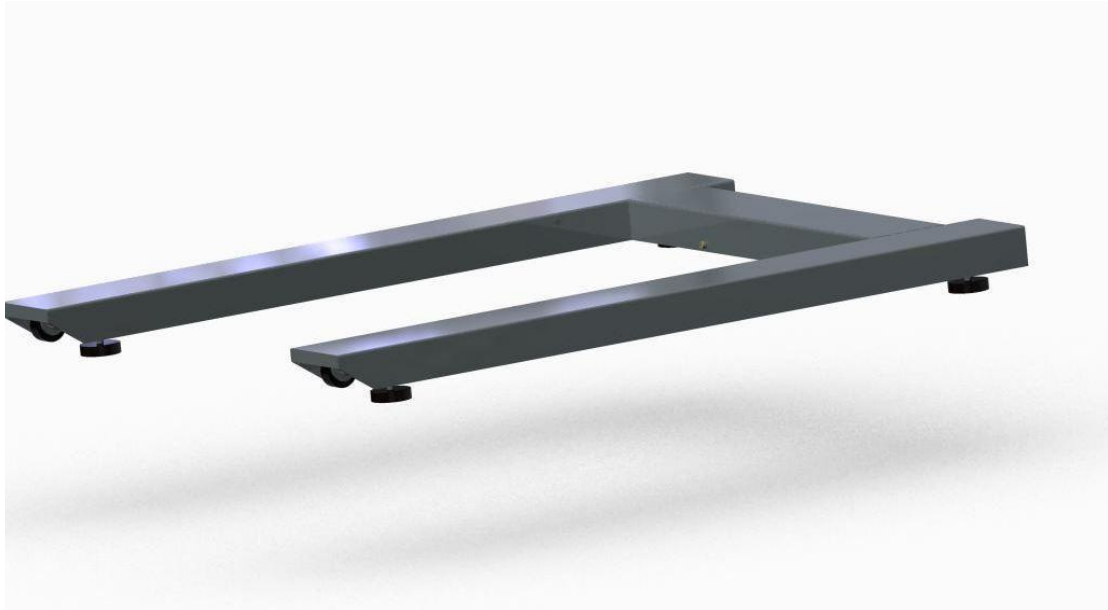


PPP1

Weigh-Pallet Weighing Platform



description LOW PROFILE WEIGHING PLATFORM, INTENDED FOR WEIGHING EURO-PALLETS HANDLING FORKLIFT OR PALLET RACKS.

highlights low profile design • Suitable for weighing Euro-pallet • ANDmonoblock frame designed for maximum strengthallows the equipmentssupport a high frequency of use • Built-in handles and wheels for transporting and moving equipment• Load cells with adjustable feet and built-in bubble level allow correct leveling of the equipment• Complies with directive 2014/31/eu for commercial transactions.

platform Made of SR275 steel • Equipped with 4 load cells • Built-in bubble level • Built-in handles and wheels • Surface finish in 3 steps: mechanical pickling + epoxy primer + anti-corrosion paint.

load cells Cut-type analog load cells • Capacities of 500 / 750 / 1000 / 1500 kg • THEnickel plated steel • Adjustable rotating foot • IP68 protection index• CE / OIML R60 approval.

box connections Stainless steel • Adjustment potentiometers • IP67 protection rating.

wiring harness Rubber outer coating• Stainless steel inner mesh+aluminum shield.

mounting above ground.

viewers PV1 | BP120 | BP101

add-ons Weight Repeater | Printer | Weighing Management Software | Industrial Tablet 10" | Industrial Terminal 15"

models	Dimensions W x L x H (cm)	No. Cells	Capacity (kg)	Division (g)
	120 x 92,5 x 10	4x	1500 / 3000	500 / 1000